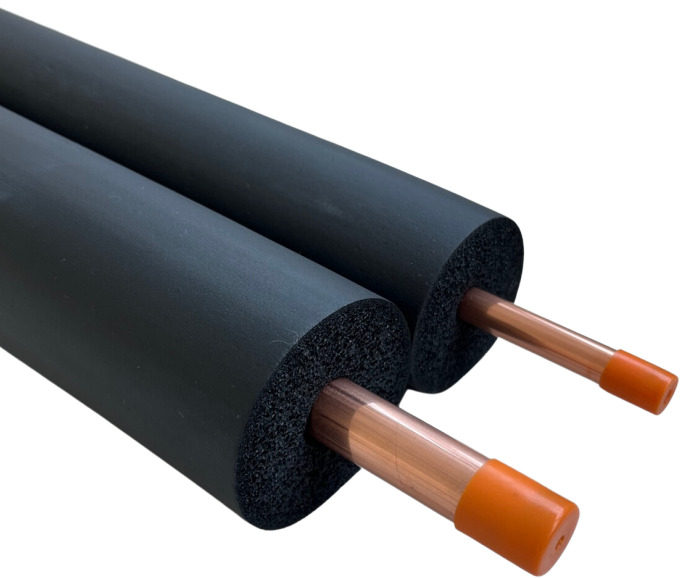


SUPERLON[®]

HoCoL PAIR

Pre-Insulated Annealed Copper Pair Coil

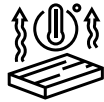
HoCoL PAIR is manufactured with high quality copper tube and Superlon closed cell nitrile rubber for you to install pre-insulated piping safer and easy.



FEATURES



SUPERIOR FIRE PERFORMANCE



SUPERIOR THERMAL RESISTANCE

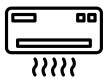


FAST & EASY INSTALLATION



**EASY SPLITTING AIR-
CONDITIONING INSULATION**

APPLICATIONS



AIR CONDITIONING



REFRIGERATION



RESIDENTIAL & INDUSTRIAL

CERTIFICATIONS



For further inquiries, kindly contact:

SUPERLON WORLDWIDE SDN. BHD. (252355-U)
Lot 2567, Jalan Sungai Jati, 41200 Klang, Selangor, Malaysia.
Tel : +603-3382-1688
Email: inquiry@superlon.com.my

SUPERLON®

HoCoL PAIR

INSULATION PROPERTIES

Material	Flexible NBR Paired Tubes				
Density Range	40 kg/m ³ - 80 kg/m ³				
Surface Spread of Flames Fire Performance	Class 1 Class 0			BS 476 Part 7 BS 476 Part 6	
Thermal Conductivity	Mean Temp	0°C	20°C	40°C	ASTM C518 ASTM C177
	W/m.K	≤ 0.032	≤ 0.034	≤ 0.036	
Water Vapour Permeability Water Absorption by Volume	≤ 1.65 X 10 ⁻¹⁴ kg/Pa.m.s μ ≥ 12,000 ≤ 0.2%				ASTM E96 ASTM C209

SEAMLESS COPPER TECHNICAL SPECIFICATION

Standard	JIS H3300	
Materials Grade	C1220	
Chemical Composition	Cu (Copper)% P (Phosphorus) %	≥ 99.90 0.015 - 0.040
Mechanical Properties	Temper	Annealed O - H
	Tensile Strength (Mpa)	Over 205
	Elongation (%)	Over 40 (50mm)
	Grain Size (mm)	0.025 ~ 0.060

PRODUCT DIMENSIONS

Copper Pair Size (Outer Diameter)	Copper Wall Thickness (mm)	Insulation Wall Thickness (mm)	Length (m)
1/4" X 3/8" 1/4" X 1/2" 1/4" X 5/8" 3/8" X 5/8" 3/8" X 3/4"	0.61, 0.71	13	15
1/4" X 3/8" 1/4" X 1/2" 1/4" X 5/8" 3/8" X 5/8" 3/8" X 3/4"	0.61, 0.71	19	15

For special copper wall thickness requirements, kindly contact Superlon for further information.

For further inquiries, kindly contact:

SUPERLON WORLDWIDE SDN. BHD. (252355-U)
 Lot 2567, Jalan Sungai Jati, 41200 Klang, Selangor, Malaysia.
 Tel : +603-3382-1688
 Email: inquiry@superlon.com.my